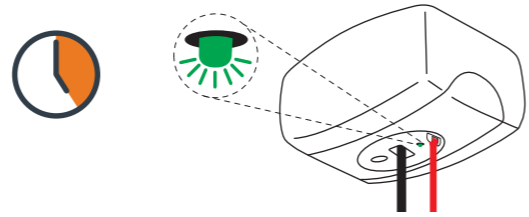


# QUICK START GUIDE - C-450/C-625/C-800/C-1000 Ceiling Lift

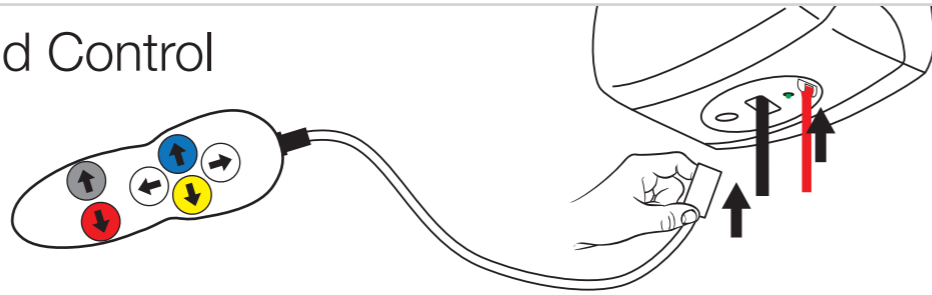
## 1 Charge the Lift

**i** Before initial use, the lift unit must be charged for 5 hours.



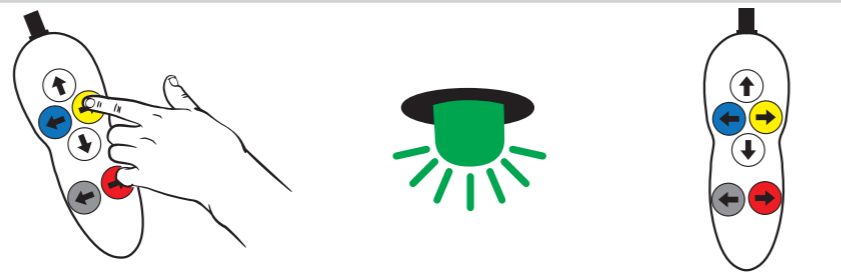
## 2 Connect the Hand Control

**i** Make sure the white plastic tab on the Emergency Stop strap is pushed fully in place.



## 3 Turn On the Lift

Press any button on the hand control to turn the lift on.



## 4 Turn Off the Lift

The lift automatically shuts off after approximately 5 seconds of non-use.



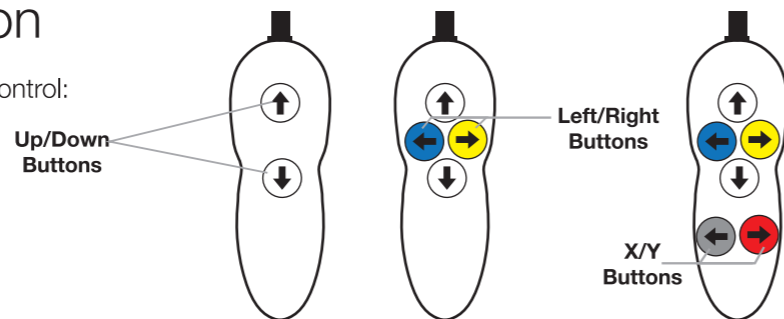
**i** In an emergency, the lift can also be shut off by pulling the red Emergency Down strap.

## 5 Hand Control Operation

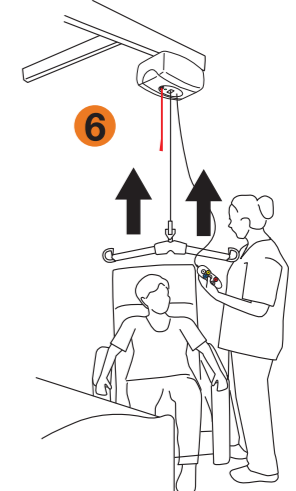
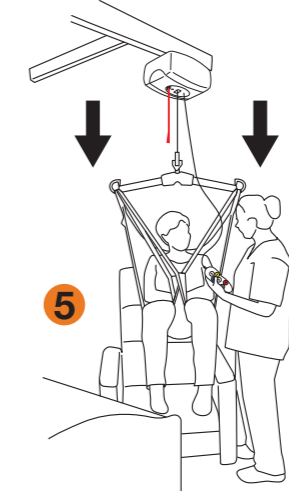
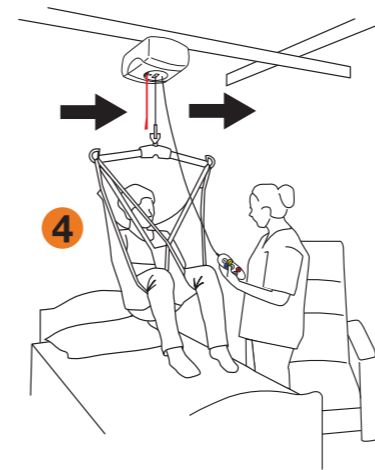
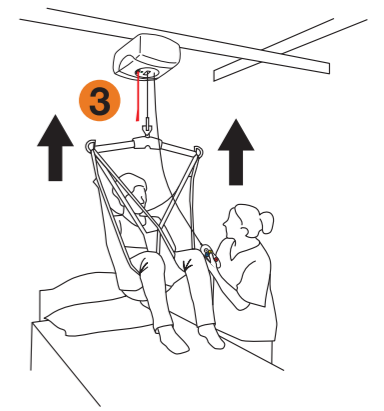
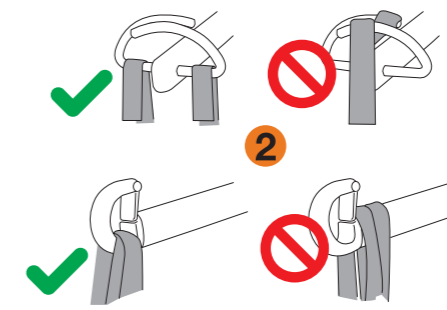
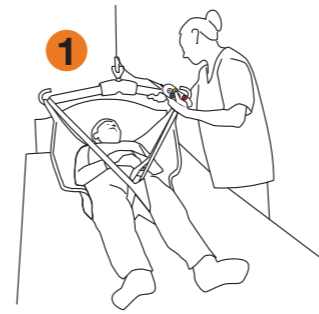
The C-450/C-625/C-800/C-1000 lift hand control:

- Controls lift motion

It comes in models for Manual Traverse, Power Traverse, Power Traverse "XY" and Power Turntable Lift Systems.



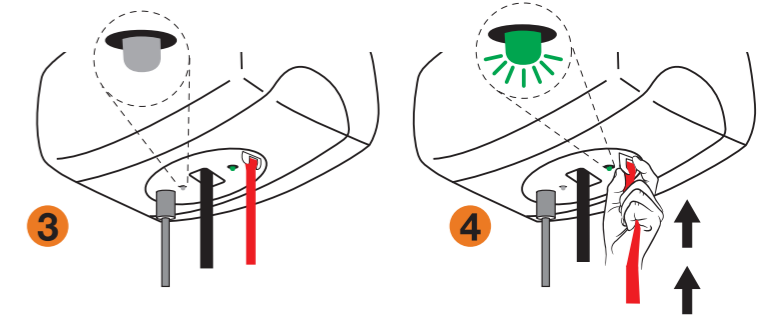
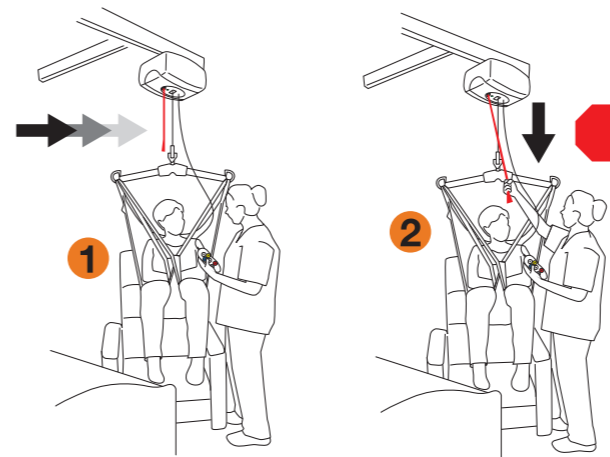
## 6 Transfer an Individual



- ⚠ Never drag the lift along the track by pulling with the hand control.
- ⚠ Avoid any obstructions that may cause injury to the individual in the sling or damage to the lift.

## 7 Emergency Stop

The lift unit has an Emergency Shut-off feature so that in an emergency the operator can completely cut power to the lift.



**i** The white plastic tab must be pushed back into place in order to restore power to the lift.

**C-450/C-625/C-800/C-1000 Ceiling Lifts**  
The C-450/C-625/C-800/C-1000 is a lifting aid used by health care professionals and caregivers in homes, institutions, and long term care facilities to lift, position and transfer clients or a disabled family member. Functions such as lifting up or down or moving left or right are controlled by pressing buttons on the pneumatic hand control attached to the lift.

⚠ Before using the C-450/C-625/C-800/C-1000 lift system, check the lift, track, and sling for any unusual wear or damage. Refer to the owner's manual for each piece of additional equipment to determine what should be checked. If anything looks unusual, contact your local Handicare dealer before use. Failure to check the lift could result in damage to the lift or serious injury to the operator or the individual being lifted.

⚠ Failure to comply with warnings in this Quick Start Guide may result in injury to the operator or the individual being lifted or transferred, as well as damage to the lift and related components. If you have any questions after reviewing this guide, contact your local authorized Handicare dealer.

⚠ Prior to attempting these steps, review the instructions for all parts and accessories; Contact your local authorized Handicare dealer if you have any questions or concerns.

HANDICARE USA, INC. 10888 Metro Court St. Louis, MO 63043 USA Tel: 866.891.6502 www.handicareusa.com	HANDICARE CANADA 485 Millway Avenue, Unit 2, Concord, ON L4K 3V4 Tel: 877.304.5438 www.handicare.ca
--	---

Handicare USA is quality certified  
in accordance with ISO 13485